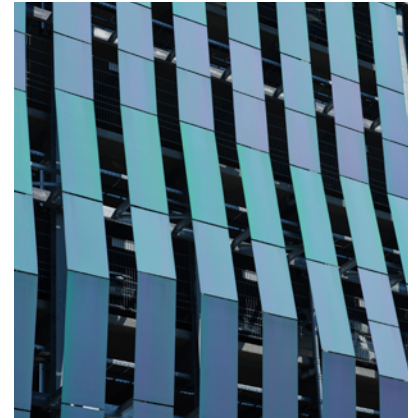


# Parking house LEJ Campus in Leipzig (DE)



In our first hybrid project, the new parking garage of DHL, building-integrated photovoltaics in the building envelope and rooftop solar systems were combined to cover a large part of the DHL campus' electricity requirements.



**809 MWh**

Energy yield per year



**305,550 kg/year**

CO<sub>2</sub> savings based on country-specific emission factors, determined in 2024



**SKALA Black, Light Green**

Customer:	Leipziger Stadtbau AG
Architects:	Melicia Planchart, Architektur von Domaros
Project realization:	2023
Location:	Schkeuditz, Germany
Building type:	Parking house
Facade/roof:	1,872 m <sup>2</sup>   2,820 m <sup>2</sup>
Facade/roof:	2,002 modules   1,307 modules
Facade/roof:	240 kWp/ 588 kWp
PV modules roof:	Jetion monokristallin
Project partners:	elektroBAU Dresden GmbH
Photos:	Olaf Rohl