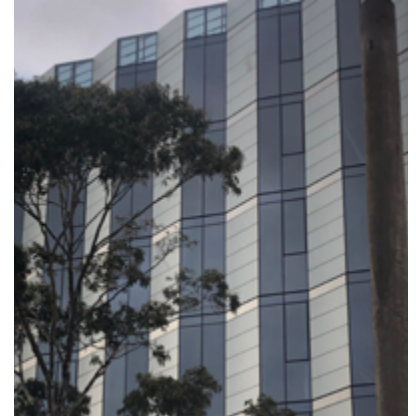


Spencer Street in Melbourne (AU)



On Australia's first solar facade, transparent window surfaces were combined with opaque solar modules consisting of light grey SKALA modules. The elements made of different facade materials were installed that they are optimally orientated the solar radiation.



75.73 MWh

Energy yield per year



58,300 kg/year

CO₂ savings based on country-specific emission factors, determined in 2024



SKALA Light Grey

Customer:	Fethers architectural pty ltd
Architect:	Pete Kennon
Project realization:	2023
Location:	Melbourne, Australia
Building type:	Commercial building
Building type:	1,203 m ²
Number of modules:	1,220 modules
Plant power:	146 kWp
Project partners:	Fethers architectural pty ltd
Photos:	Fethers architectural pty ltd