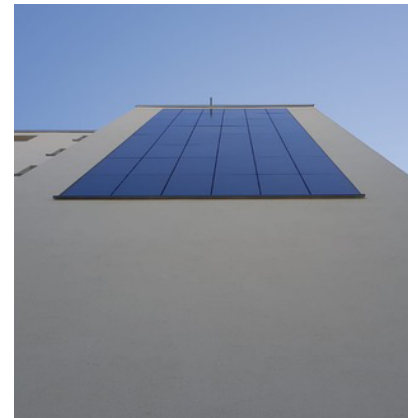
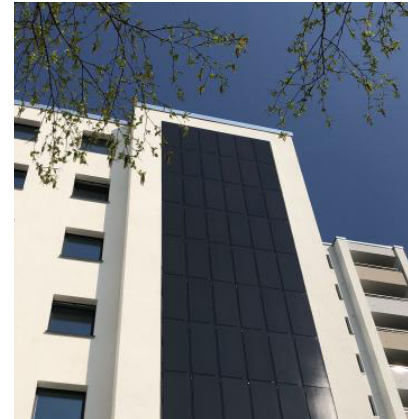


Residential Park Mariendorf in Berlin (DE)



As part of a modernization project, an energy concept consisting of combined heat and power units and renewable electricity from photovoltaic modules was implemented in 36 houses, each with a 100 m² facade system consisting of black SKALA modules.



7.9 MWh

Energy yield per year



2,800 kg/year

CO₂ savings based on country-specific emission factors, determined in 2020



SKALA Black

Customer:	Gewobag
Architects:	Projekt Plan und Bau K2 GmbH
Project realization:	2018
Location:	Berlin, Germany
Building typ:	Residential buildings
Facade area:	105 m ²
Number of modules:	96 modules
Plant power:	13.92 kWp
Project partners:	ecopark GmbH GASAG Solution Plus AG
Photos:	Leo Seidel